

Aqara Hub

Product Specifications



深圳绿米联创科技有限公司
Lumi United Technology Co., Ltd.

Table of Contents

Revision Record	3
1. Product Description	4
1.1. Product Overview	4
1.2. Three-view Diagram of the Product	4
1.3. Product Selling Point	4
2. Product Parameters	6
2.1. Basic Parameters	6
2.2. Electrical Parameters	6
2.3. Wireless Parameters	7
2.4. Environmental Parameters	7
3. Product Information	8
3.1. LED Light Status Information	8
3.2. Button Functions	8
3.3. Installation Instructions	9
3.4. Instruction Manual	9
4. Product Testing Information	10
4.1. Reliability and Quality Testing	10
4.2. Certification Information	11

Revision Record

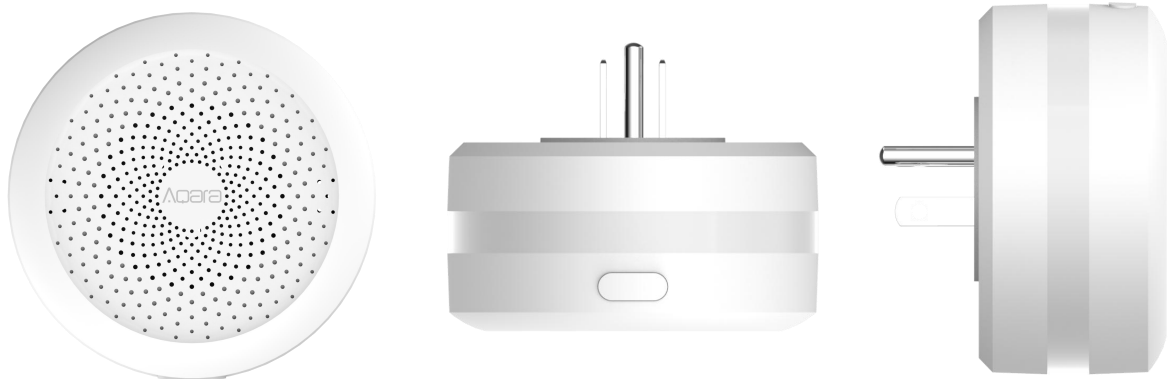
Edition	Revised Content	Editor	Date
V1.0	1. Initial edition	Chen Zhigang	20180516

1. Product Description

1.1. Product Overview

The Aqara Hub is a smart bridge compatible with the Apple HomeKit. Through the Hub, you can easily connect Aqara accessories with HomeKit and implement control of devices such as smart switches and RGB night light, monitoring temperature, humidity and atmospheric pressure, sensing motion, detecting water leakage and other functions.

1.2. Three-view Diagram of the Product



1.3. Product Selling Point

Supports Apple HomeKit;

Smart home center, able to connect up to 32 individual Aqara smart devices;

Control the smart devices through Siri voice commands;

Realize more automated scenarios;

Control your home through the Aqara Home app anytime, anywhere;

Adjust the color and brightness of the RGB night light anytime;

Private and safe with the communication security assured by the point to point encryption and verification techniques in the HomeKit;

2. Product Parameters

2.1. Basic Parameters

Category	Description
Product Brand	Aqara
Product Name	Hub
Product Model	ZHWG11LM
Product Dimensions	80 × 80 × 41.5 mm
Product Color	White
Product Material	ABS+PC
Power Plug Types	China, USA, UK, Europe
Product Gross Weight	186.5g
Product Net Weight	138g

2.2. Electrical Parameters

Category	Description
----------	-------------

Input Voltage	100~240V~, 50Hz / 60Hz
Input Current	0.2A

2.3. Wireless Parameters

Category	Description
Wireless Connection	Zigbee
Wireless Standard	IEEE 802.11 b/g/n 2.4 GHz
Connection Distance	30M indoors with no obstructions

2.4. Environmental Parameters

Category	Description
Operating Temperatures	-10°C ~ +40°C
Operating Humidity	0~95% RH, Non-condensing

3. Product Information

3.1. LED Light Status Information

LED Light Status	Description
Rapid blinking, yellow	Entering initializing condition, appears when use for the first time or after a reset
Slow blinking, yellow	Firmware upgrading
Rapid blinking, blue	Appears when connecting to Wi-Fi, disconnected from network or during re-connection to network after power reset.
Slow blinking, purple	Addition of accessory allowed

3.2. Button Functions

Button Action	Description
Single press	Turn on/off night light
10-second long press	Reset Hub
3 consecutive short presses	Enter accessory addition mode

10 quick presses	Restore factory settings and delete all accessory data.
------------------	---

3.3. Installation Instructions

First power up the Hub and wait 30 seconds until the yellow light blinks rapidly. Please ensure that your iPhone or iPad (iOS 10.3 or above) has been connected to a 2.4GHz Wi-Fi network.

If a dual band router is used, please turn off the 5GHz Wi-Fi network first.

Please keep your phone in close proximity to the Hub when establishing a connection. At the same time, ensure your phone and the Hub are connected to the same Wi-Fi network.

3.4. Instruction Manual

Open the app and click the “+” in the upper right corner of the main page. Click the add device (accessory) page. Choose the Hub then enter the HomeKit number on the Hub or quick installation manual by scanning or entering the number according to instructions in the app. Lastly, follow the instructions to add the Hub to the corresponding family or room. Please do not lose the HomeKit number.

If the connection is unsuccessful, please press the Hub button for 10 seconds until the yellow light begins to blink rapidly then reconnect.

4. Product Testing Information

4.1. Reliability and Quality Testing

Product Name	Tested Item	Details	Source
Hub	Fall test	1.2m	Tested by Lumi United
	High/low temperature test	-5°C~40°C	Tested by Lumi United
	Aging reliability test	48 hours	Tested by Lumi United
	Number of button presses	Strength, lifespan	Tested by supplier
	Case material	RoHS report, 2.0V0, 2.0V2 flame resistance, even light, light reflection, shading	Tested by supplier
	SRRC	Wi-Fi, Zigbee	Tested by supplier
	RoHS	Entire product, every component	Tested by supplier

		Safety test - high pressure test	
	CQC	Electromagnetic compatibility test EMC - Anti lightning, Anti electromagnetic interference	Tested by supplier

4.2. Certification Information

Category	Description
Certification Information	FCC ID: 2AKIT-ZNCZ12LM IC: 22635-ZNCZ12LM ETL